
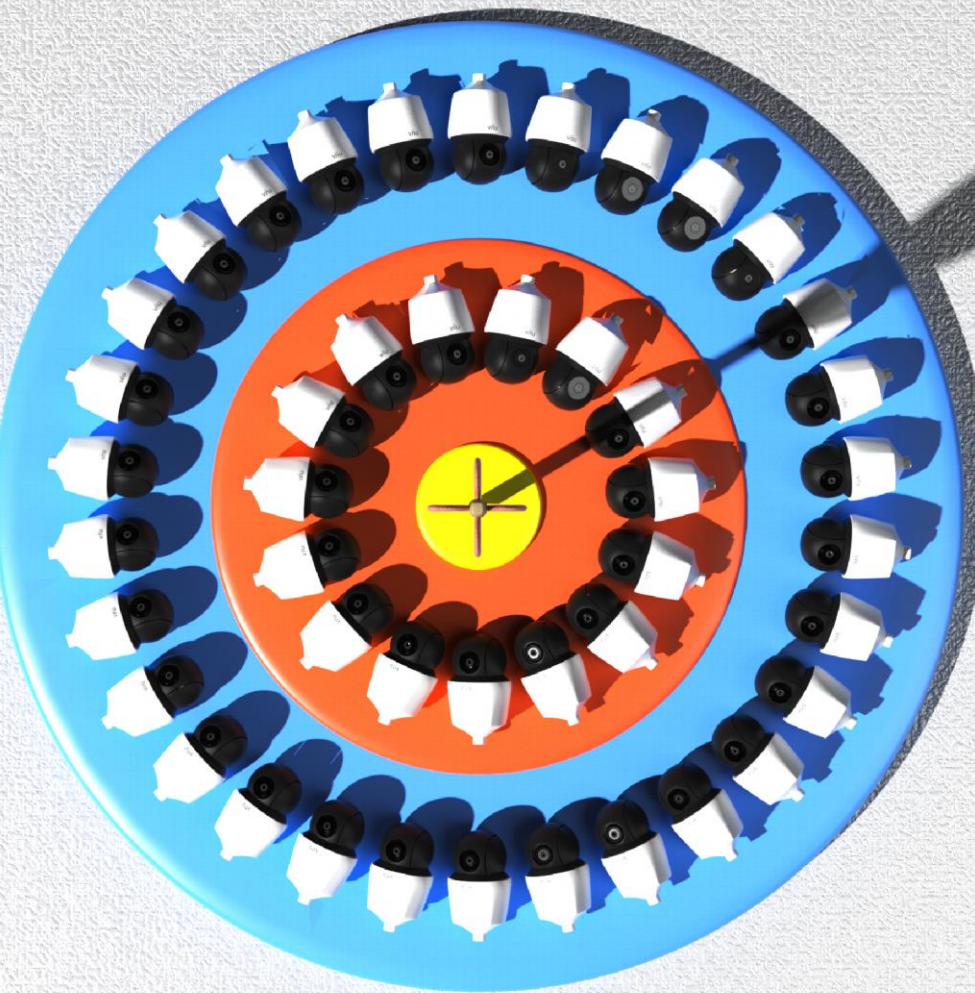


The UNV logo is located on the white upper housing of the camera. It consists of the letters 'UNV' in a bold, sans-serif font, with a curved line above the 'U' and 'N'.

4 inch PTZ Camera Introduction

A network diagram is positioned at the bottom of the slide. It features a series of interconnected nodes, represented by small colored circles (purple, blue, and cyan), which are connected by thin lines. The nodes are arranged in a roughly circular pattern, with some lines crossing over each other, creating a complex web of connections.

JOJO 2021.7.9



CONTENTS

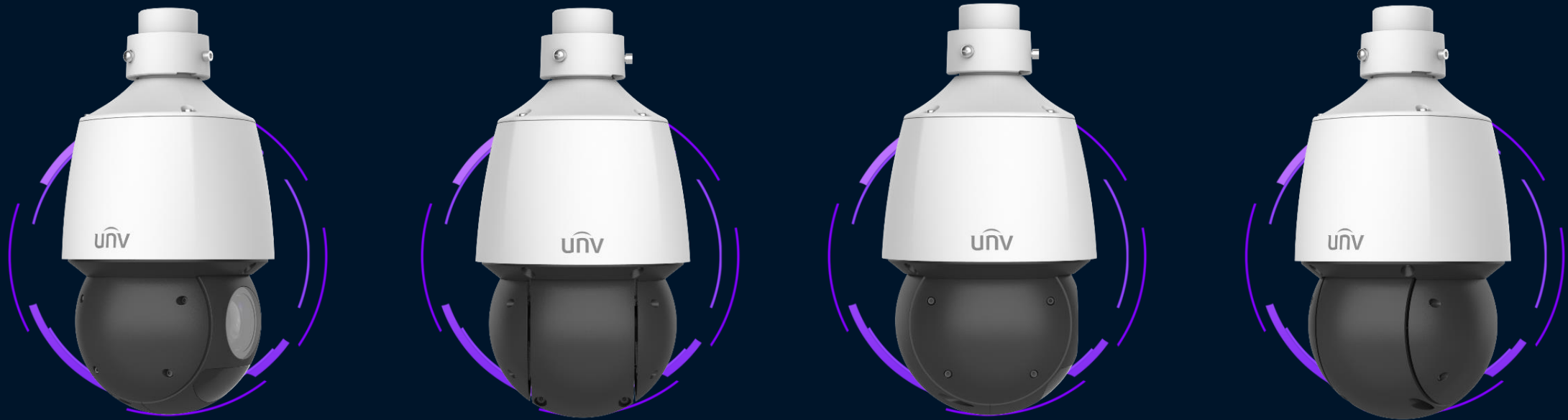
01. Background

02. Product Features

03. Applications

04. Competition Comparison

Invisible Design



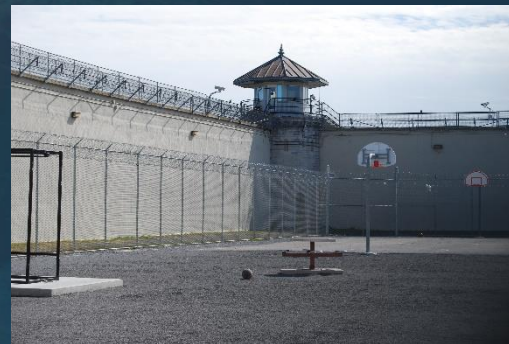
Invisible monitoring direction



4 inch, football-sized



4MP & 25x optical zoom



Prison



Parking Lot

Challenges



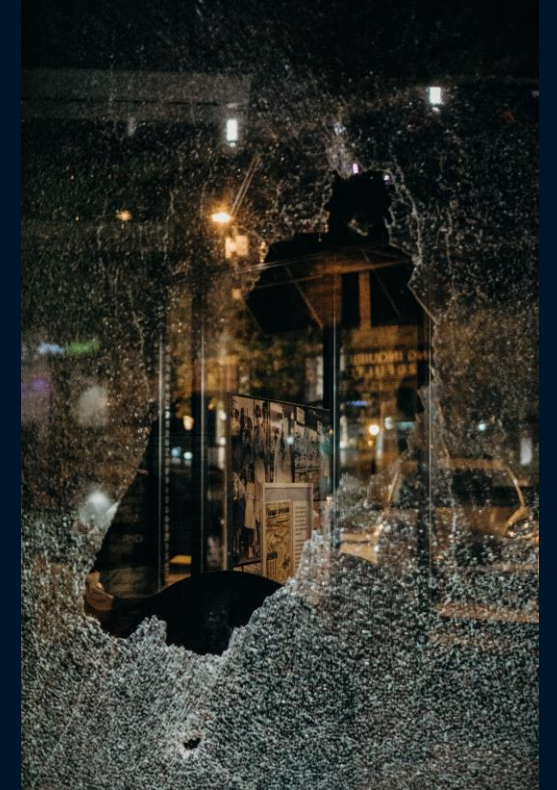
High labor cost



False alarms



Difficult retrieval



Ineffective protection



CONTENTS

01. Background

02. Product Features

03. Applications

04. Competition Comparison

Ease of Use

Easy to Install

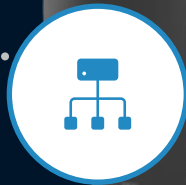


unv

Easy to Operate



Easy to Adjust



Easy to Integrate



Easy to Install



9.5Kg, Ø270 x 497mm



5.3Kg, Ø227 x 359.4mm



3.0Kg, Ø166 x 295mm



Easy to Adjust



High Efficiency



Low Efficiency



Easy to Integrate



RS485

Humidity
Temperature

OSD



Data center

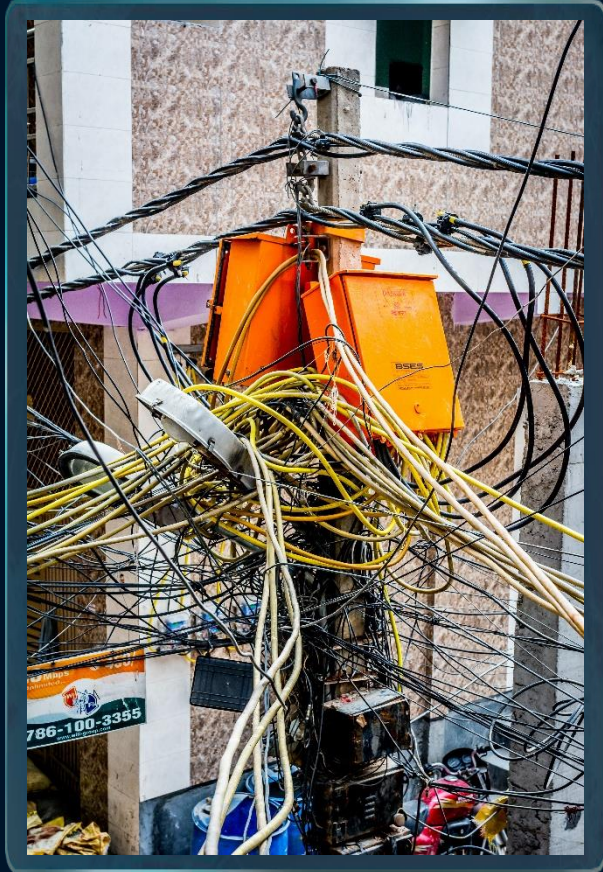


Greenhouse

Easy to Integrate



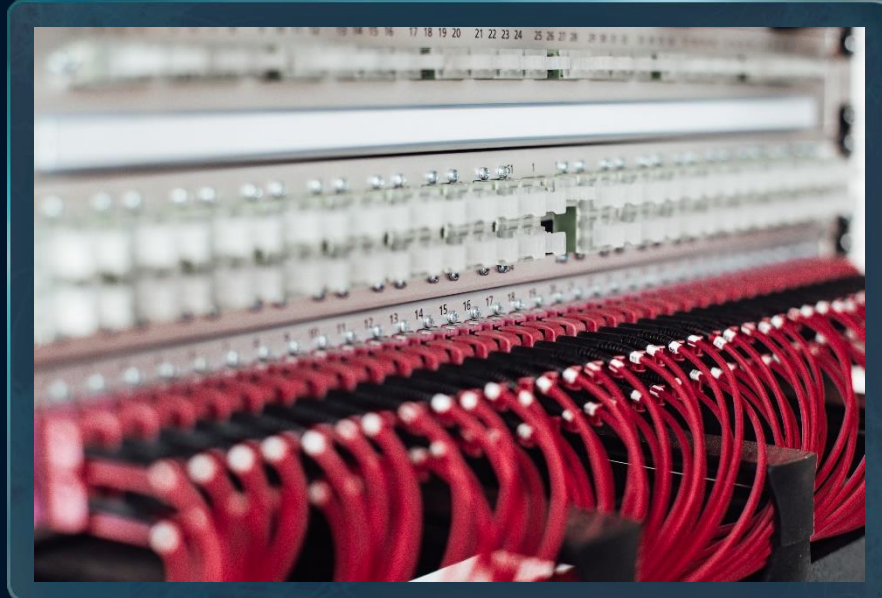
Orderly Wiring with POE



Disorderly wiring

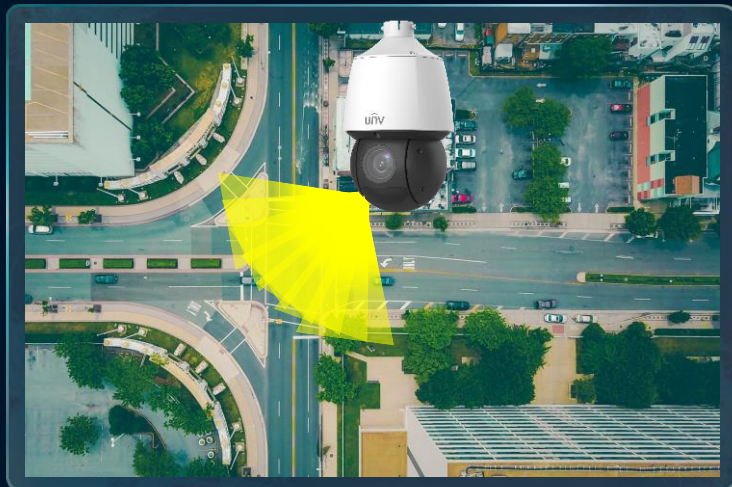


Improve installation efficiency



Orderly wiring with POE

Easy to Operate



Patrol

Preset/Patrol/Scan/Pattern



External device

Enable to be controlled by keyboard via RS485.



Power-off memory

Remember the previous position when power is restored.



Key Features

4MP 25x optical zoom

Deliver high quality image

AI-based Auto-Tracking

Track a moving target in real time

Powered by Deep-learning

Smart intrusion prevention
Face capture
People counting



LightHunter Technology

Provide clarity images in the low-light environment

Quick Focus Technology

Clear focus experience throughout entire zooming process

Advanced Hardware

IP67 ingress protection
IK10 vandal resistance
6Kv lightning rating
-40°~+70° operation condition

4MP & 25x Optical Zoom



High definition surveillance

Clear Details monitoring



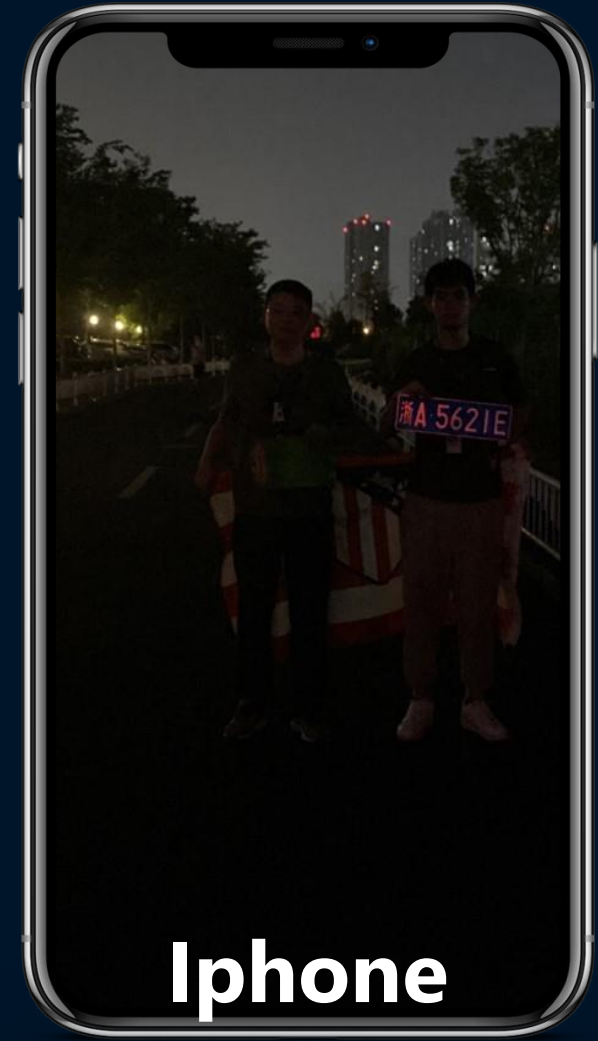
Enterprise Park



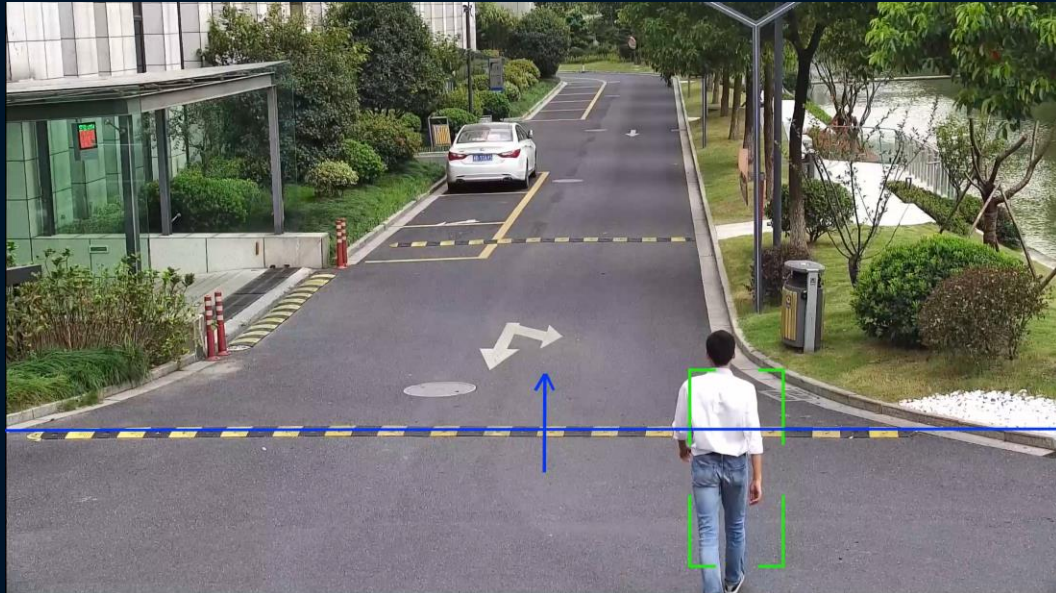
Urban Road

Quick preset

LightHunter Technology



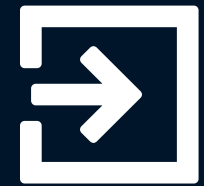
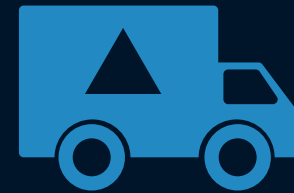
AI-based Auto-Tracking



Safe city



Industrial park



Human & vehicle classification

Quick Focus Technology



Provides clear focus experience throughout entire zooming process.



Greatly shorten focus time, increase product value.

Powered by Deep-learning



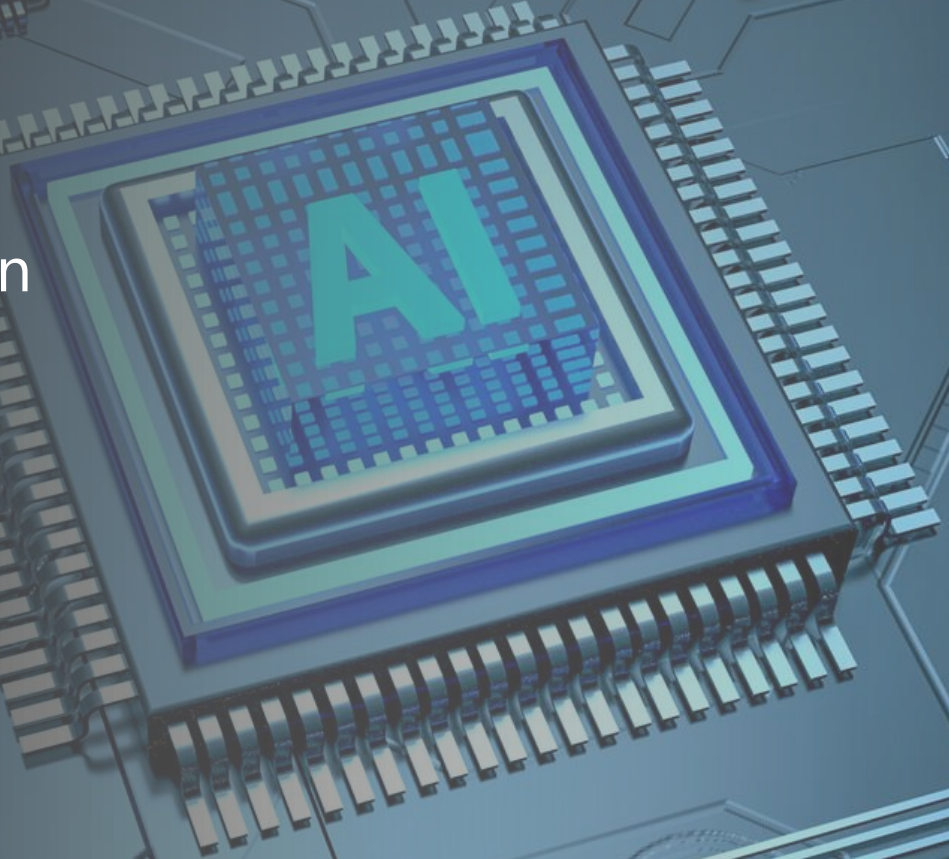
Smart intrusion prevention



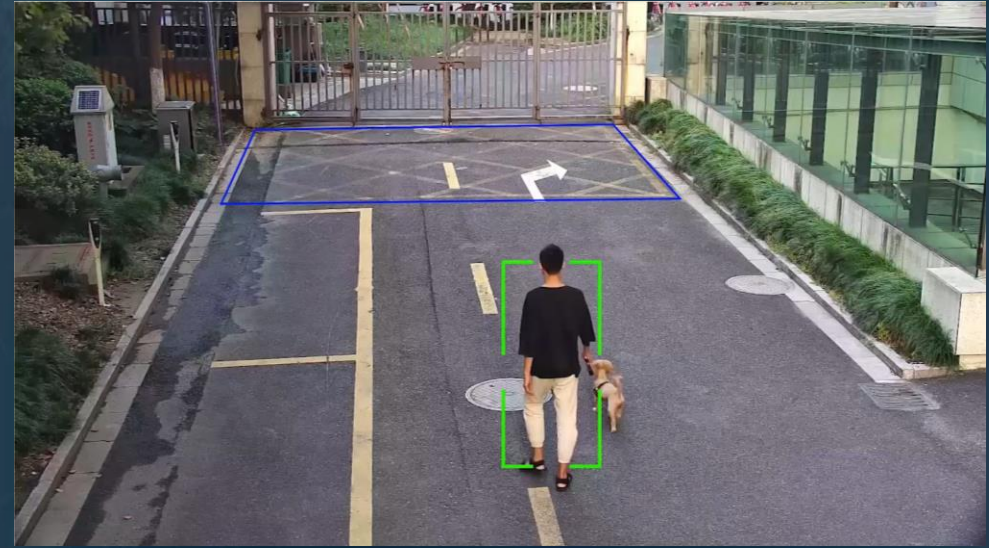
Face capture



People counting



Smart Intrusion Prevention



Smart Intrusion Prevention

Focus on human, non-motor vehicle and vehicle



False alarm rate < **1%**

Traditional IVS

False or missed alarms by all targets



Face Capture

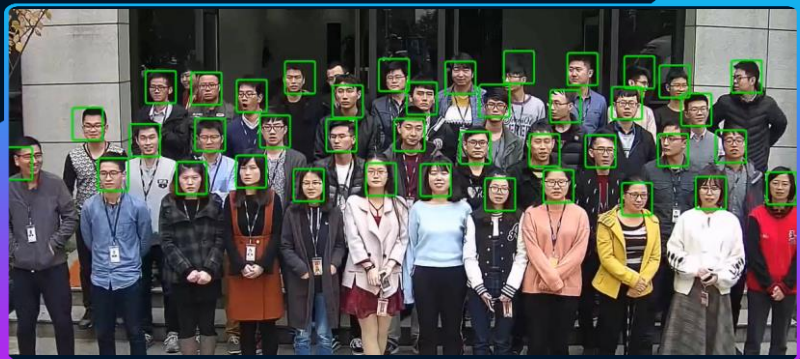
Wide usage of face capture



Capture abnormal faces, bowed face, side face.



Capture small faces, only need 30*30 pixels



Capture up to 40 faces in the same scene

Selection mode



Effect priority



Speed priority



Periodic selection



Capture rate $\geq 98\%$



Station



Airport



Safe city



Hotel



Coffee shop

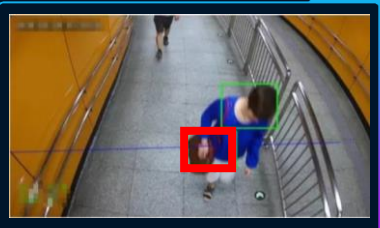


Shopping mall

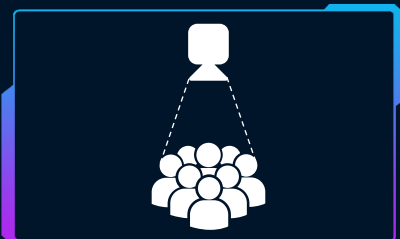
People Counting

Deep-learning people counting

Traditional people counting

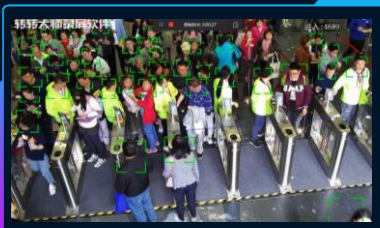


False/Miss alarm

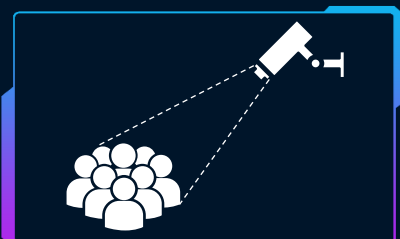


Only people counting

Deep-learning people counting



High accuracy

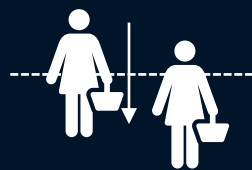


People counting & monitoring

Selection mode



Area mode



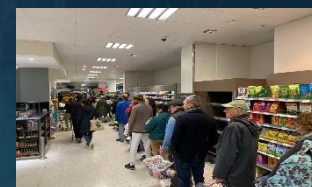
Crossing line



Stadium



Supermarket



Checkout counter



Scenic area

Advanced Hardware



IP67 ingress protection



IK10 vandal resistance



6Kv lightning rating



-40° ~ +70° operation condition

IP67 Ingress Protection

08/07/2021 03:02:36

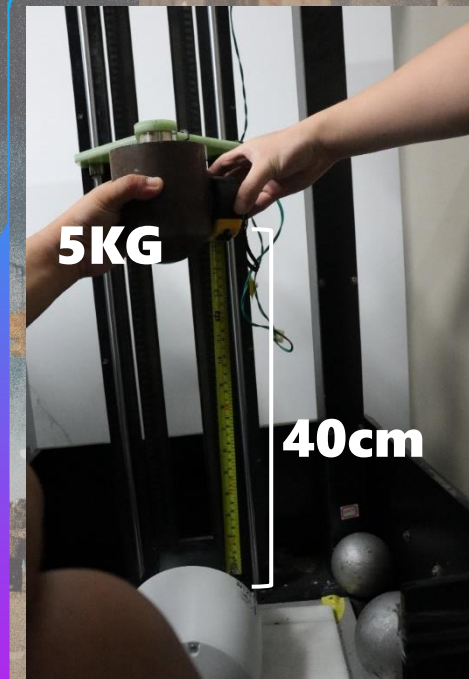
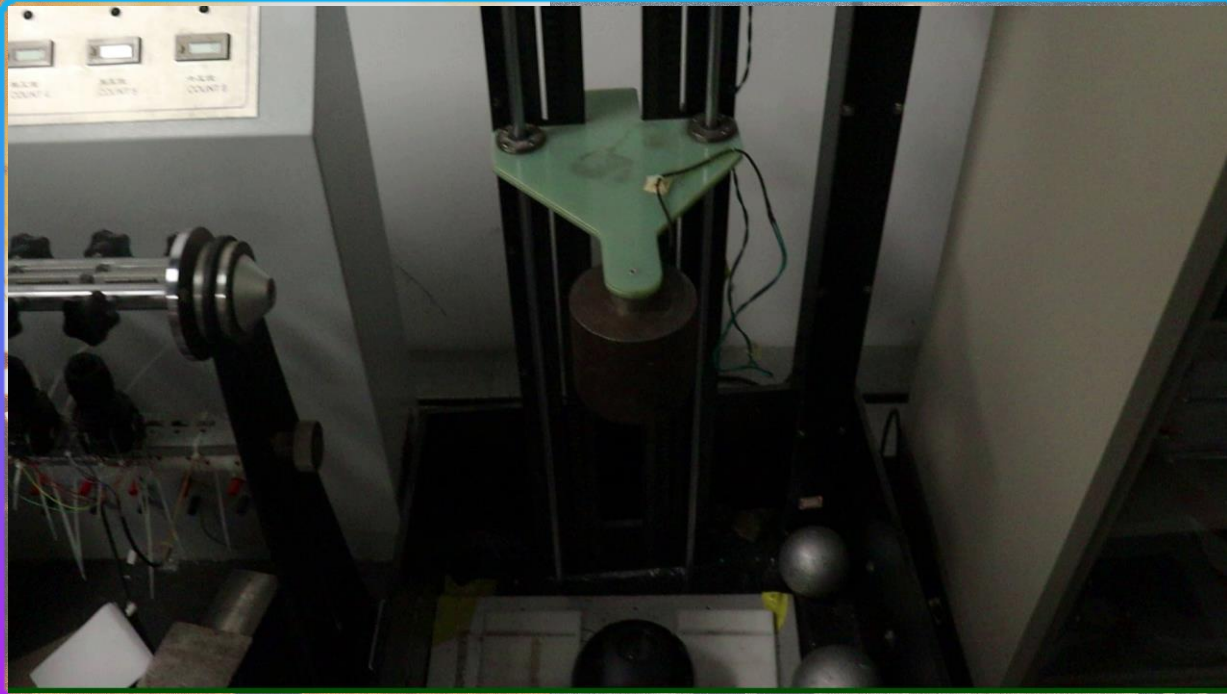


Rainy
weather

Dust
weather



IK10 Vandal Resistance



6Kv lightning Protection



High Temperature Range



+70°C



-40°C

The UNIV logo is positioned on the white upper portion of a microscope. It consists of the letters 'UNIV' in a bold, sans-serif font, with a thin, curved line arching over the 'U'.

CONTENTS

01. Background

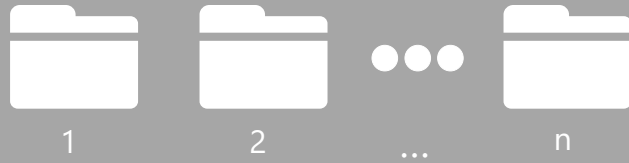
02. Product Features

03. Applications

04. Competition Comparison

SIP Function Applications

Conventional history file



There are mass of irrelevant data: leaves, animals, light and shadow, etc. It takes a lot of time for the user to find the target they really need.

Low efficiency retrieval

Smart Intrusion Prevention



Captured targets are already distinguished by the categories: "Human", "Vehicle" and "Non-motor vehicle". It's easy to locate the information you want.

High efficiency retrieval



Monitoring Center



Restricted Areas



Residences



Factories

Face Capture Applications

The purpose of face capture is recognition



Blacklist alarm



Face tracking



Access control



VIP Recognition



Station



Airport



Hotel



Safe city

People Counting Applications



Flow control



Optimize staffing schedules



BI report



Queue management



Stadium



Supermarket



Checkout counter



Scenic area



CONTENTS

01. Background

02. Product Features

03. Applications

04. Competition Comparison

Products Comparison

Type	Item	UNV IPC6424SR-X25-VF	DH SD49425XB-HNR	HK DS-2DE4425IW-DE (S5)
Video	Frame rate	2688 × 1520 @ 30fps	2688 × 1520 @ 30fps	2688 × 1520 @ 30fps
	Optical zoom	25x	25x	25x
	IR distance	100m	100m	100m
Smart	Deep-learning functions	Auto-tracking People counting Smart Intrusion Prevention Face capture	Perimeter Protection Face capture	Perimeter Protection Face capture
Hardware	Interface	Alarm I/O:2/1,Audio I/O:1/1 RS485, BNC	Alarm I/O:2/1,Audio I/O:1/1	Alarm I/O:1/1,Audio I/O:1/1
	Ingress protection	IP67	IP66	IP66
	Vandal resistance	IK10	NA	NA
	Operation condition	-40°C to +70°C	-40°C to +70°C	-30°C to +65°C
	Material	Metal	Metal	Metal

The UNV logo, consisting of the lowercase letters 'unv' in a white, sans-serif font, is positioned at the top center of the image, directly above the camera lens.

All you need, all we have

